

Reg. No.

--	--	--	--	--	--	--	--	--	--

**BIDIDC 261**



**Credit Based IV Semester B.Sc. (I.D. & D.) Examination, September 2022  
(New Syllabus) (2015-16 Batch Onwards)  
ESTIMATION SPECIFICATION AND BOQ**

Time : 3 Hours

Max. Marks : 80

- Instructions :** 1) Answer **any 2** from Part – **A** and **4** from Part – **B**.  
2) Scientific calculator **allowed**.

**PART – A**

Answer **any 2** questions (**30** marks **each**) :

**(30×2=60)**

1. Estimate the cost of wooden partition in 'U' shape. The longer side is 4.5 m and height 3 m and shorter side is 3.3 m and height 3 m. The longer side has a door of size 0.9 × 2.1 m which is made up of block board. The bottom portion of the partition till fill level com. Plywood with panel size 0.6 × 0.45 m. The middle portion (0.9 m sill – 2.1 lintel) has a plain glass fitted with panel size of 0.6 m × 0.6 m. The upper portion is made up of tint glass with panel size 0.45 × 0.45 m.

**Cost of materials :**

Wooden members	48 Rs./r.m.
Commercial ply	475/sq.m.
Plain glass	500/sq.m.
Tinted glass	450/sq.m.
Beading	30 Rs./m
Hinges	35 Rs./No.
Door closet unit	700 Rs./No.
Block board	525 Rs./sq.m.
Wastage	15%
Labour charge	250 Rs./sq.m.

**P.T.O.**



2. Estimate the cost of T.V. unit as per a sketch given. It is made up of well seasoned waterproof plywood of thickness 22 mm and it is laminated with grey coloured laminate. Back side of the T.V. unit is fixed by 10 mm plywood and it is coated with paint. Whole unit is coated with paint cupboard, shelf and drawers are provided with decolam sheet of thickness 1.5 mm. All the shelves and drawers are provided with nailed hinges.

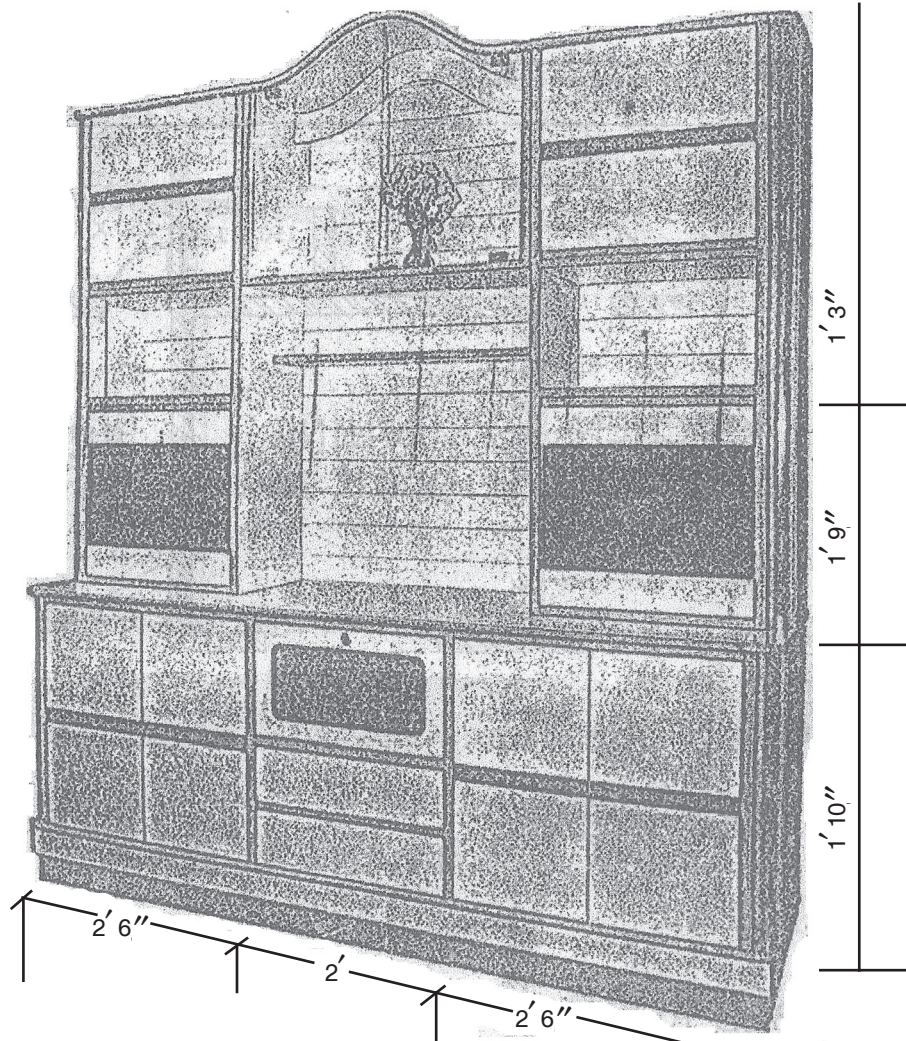
Cost of materials :

- A) 1 sq. ft. of 22 mm plywood cost Rs. 52.
  - B) 1.5 mm decolam sheet cost Rs. 36/sq. ft.
  - C) Fevicol gum 3 Ltr. cost Rs. 500.
  - D) Paint 1 Ltr. cost Rs. 460.
  - E) Primer cost Rs. 180/Ltr.
  - F) Handles cost Rs. 48/No.
  - G) Hinges with screw cost Rs. 22/No.
  - H) Telescopic drawer cost Rs. 110.
  - I) Labour charge Rs. 190/sq. ft.
  - J) Painters cost Rs. 280/sq. ft.
  - K) 22 mm plywood wastage allowance 8%.
  - L) 10 mm plywood wastage allowance 3% (Refer Fig. 1).
3. Estimate the cost of plumbing and sanitary work for a newly constructed house. Plan shown in Fig. 2. A water tank 1500 Liters capacity (Cost 2.5 Rs./Ltr.) is provided on the top of bathroom. There is main supply line is of (3/4)" diameter (cost Rs. 35/RF) and distribution line is (1/2)" diameter (cost Rs. 25/RF) 4" soil pipe connection chamber and w.c. cost Rs. 100/RF 2" pipe for waste water Rs. 2,250 shower assembly Rs. 1,300, Taps Rs. 200, Water pipe valves Rs. 350 No. for both pipes T and bends cost 75/No drainage chamber Rs. 700. (Refer Fig. 2).

### PART – B

Answer **any four** questions. Write the specification of the following : **(5×4=20)**

- A) White washing.
- B) Wood work for door.
- C) Red oxide flooring.
- D) Cement concrete for slab.
- E) Ceramic/Vetrified flooring.



Courtesy : Inside D'cor and Fancy Furniture

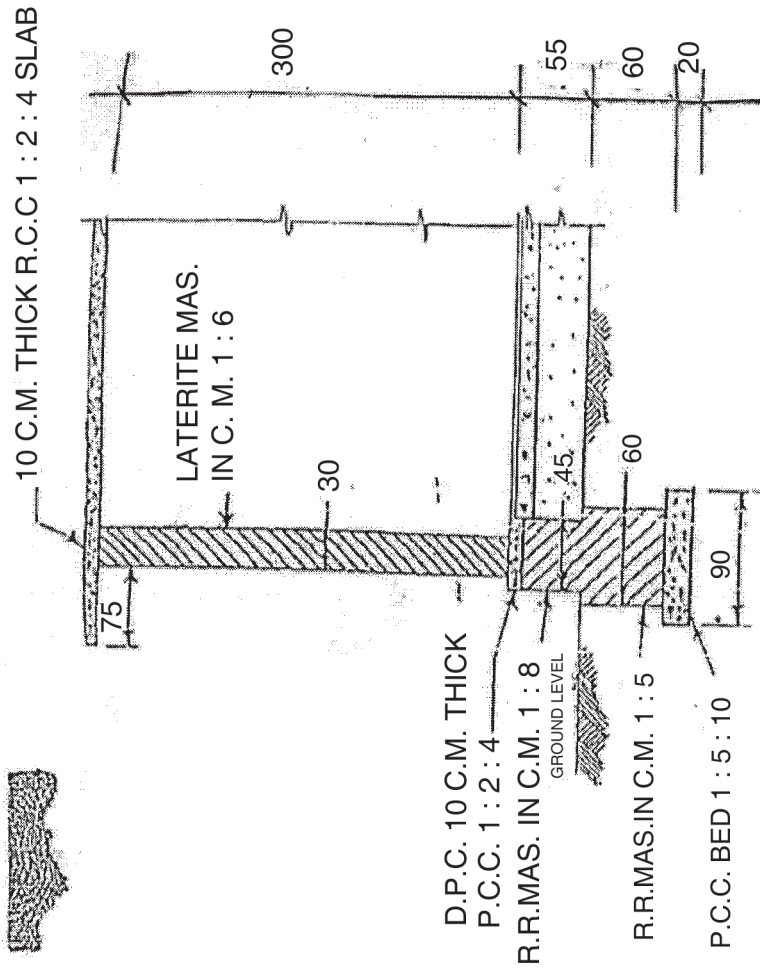
### 3

The dome shaped show case and a dark coloured laminate strip at the top and bottom give a rich look to this unit. Dark mirror on either side give the desired contrast and add to the over all get up.



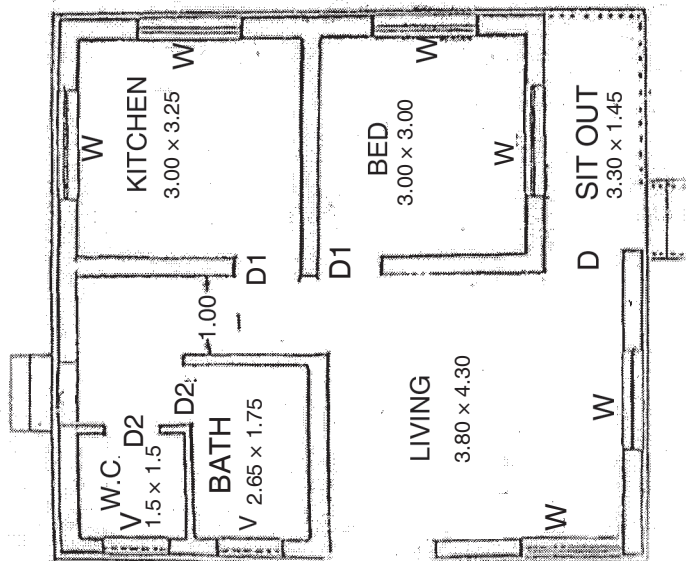
STICK WITH THE BEST FEV

Fig. 1



SECTIONAL DETAILS  
(ALL DIMENSIONS ARE IN CENTIMETERS)

ALL DIMENSIONS ARE IN METRES



PLAN (ALL DIMENSIONS ARE IN METRES)  
(SCALE : NO SCALE)

Fig. 2